

*“My doctor ordered the Cunningham Panel™ for my son and that gave him a clearer picture that my child has an autoimmune disorder. After receiving treatment, we are finally seeing the son we remember.”*



moleculera labs

Providing clinical testing services for individuals suspected of suffering from treatable autoimmune neurologic conditions

755 Research Parkway, Suite 410  
Oklahoma City, Oklahoma 73104

PHONE: 405.239.5250 FAX: 405.239.5255  
customerservice@moleculera.com

**MOLECULERA.COM**

## **COULD AN INFECTION BE CAUSING YOUR CHILD'S SYMPTOMS?**

**ANOREXIA**

**OCD**

**TICS**

**ANXIETY**

**OBSESSIONS**

**HYPERACTIVITY**

**DEPRESSION**

**BEHAVIORAL  
REGRESSION**

**DIFFICULTY  
CONCENTRATING**

**IRRITABILITY**

**AGGRESSION/RAGE**

**CHANGES IN  
HANDWRITING**

**BEDWETTING**

**SLEEP  
DISTURBANCES**

**SENSORY  
ABNORMALIES**



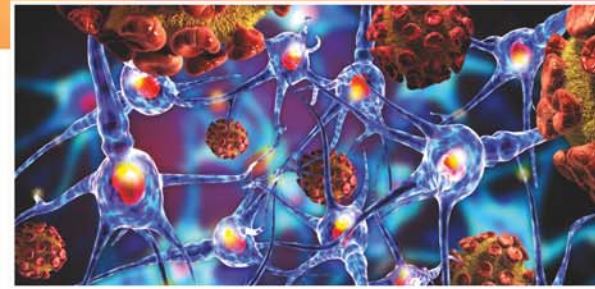
# Your child may be suffering from a treatable autoimmune disorder.

In some children and adolescents, common infections, such as strep, influenza and mycoplasma pneumonia, can trigger an autoimmune response which causes an onset of neurologic and/or psychiatric symptoms.



## WHAT TO LOOK FOR

- ◆ Onset of OCD, tics, anorexia, anxiety, sleep disturbances, aggression/rages, ADHD, mood swings, irrational fears or other neuropsychiatric symptoms, following an infection(s).
- ◆ Children may have a neuropsychiatric diagnosis.
- ◆ Infections can be viral, bacterial, fungal, parasitic or caused by environmental factors. They may include the flu, chronic sinusitis, mononucleosis, herpes simplex, or Lyme disease.
- ◆ Treatment with psychotropic medications may worsen or do not resolve the symptoms.



## WHAT TAKES PLACE?

In a subset of children, the immune system produces autoantibodies, intended to fight an infection but instead attack healthy tissue in the child's brain, resulting in the neurologic and/or psychiatric behaviors. This misdirected autoimmune response causes inflammation in a portion of the brain, known as the basal ganglia, responsible for movement and behaviors. The inflammation, along with elevated levels of circulating autoantibodies directed against certain receptors in the brain induce the neuropsychiatric symptoms.

## COMMON INFECTIONS CAN TRIGGER NEUROLOGIC AND PSYCHIATRIC SYMPTOMS.

SEE YOUR  
CHILDREN  
SHINE AGAIN

## DIAGNOSIS & TREATMENT

The Cunningham Panel™ can assist physicians in determining the likelihood that a patient's neuropsychiatric symptoms are due to an infection-induced autoimmune response. The distinction is critical, since treatment of the autoimmune response involves eradicating the underlying infection(s) and correcting the immune dysfunction. Patients may be misdiagnosed with a psychiatric disorder and only treated symptomatically with psychotropic drugs. This, however, does not address the underlying cause behind the symptoms.

## The Cunningham Panel™

The Cunningham Panel™ can help determine whether a patient's neurologic and/or psychiatric symptoms are due to an infection-induced autoimmune response or a primary psychiatric illness. The test measures the level of circulating autoantibodies in the blood that are associated with neuropsychiatric symptoms. Elevated levels indicate that symptoms may be due to an autoimmune response caused by an infection(s).

## HOW TO ORDER

Physicians can order the Cunningham Panel™ through a secure portal on our website. A specimen collection kit is provided and the serum sample is sent overnight via FedEx to Moleculera Labs for processing. The tests are performed in duplicate and triplicate. Physicians can retrieve test results through the portal. International ordering is available.

“The Cunningham Panel helped our doctor determine that an autoimmune condition was causing my son's behaviors. An infection was causing him to act that way.”

Physicians May Order Online at: [www.moleculera.com](http://www.moleculera.com)